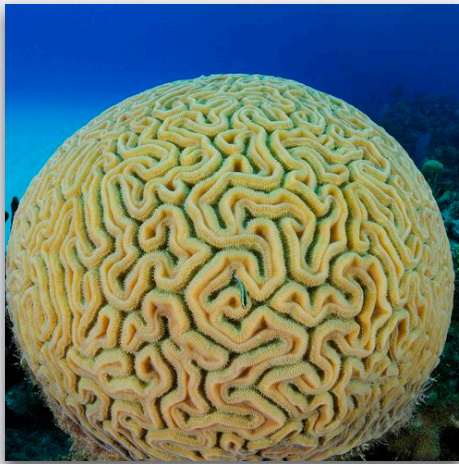


# SEA ANEMONES

What are sea anemones and their characteristics?

# SEA ANEMONES

- Cnidaria [cnidarians] - diverse group of animals that are believed to be from a single common ancestor that had stinging cells



Corals



Sea Anemones



Jellyfish



# SEA ANEMONES

- Characteristics:
  - Appear as underwater flowers
  - Similar to jellyfish because they possess stinging tentacles, radial symmetry and a nerve net



# SEA ANEMONES

- Characteristics: [continued]
  - Live as a polyp (unlike Jellyfish) meaning that they are attached to a substrate by means of a muscular foot





# SEA ANEMONES

- Locomotion:
  - Sessile (stationary) with very limited movement



# SEA ANEMONES

- Locomotion:
  - Sessile (stationary) with very limited movement



# SEA ANEMONES

- Feeding:
  - Uses stinging tentacles to get food
  - Stinging causes paralysis through the discharge of nematocysts
  - Also can trap food on the mucus and cilia on its surface
  - Digestion is primarily extra cellular and similar to jellyfish





*Killer Anemone*



# SEA ANEMONES

- Digestion:
  - Waste is also discarded through the mouth



# SEA ANEMONES

- Reproduction:
  - Similar to that of the jellyfish
  - Can reproduce asexually by splitting in half





# SEA ANEMONES

- Symbiotic Relationships:
  - Clownfish (Nemo) have a protective skin coating that allow them to live within the the stinging tentacles
  - They clean the anemones and protect its tentacles

# THE SEA ANEMONE



*Oregon Coast Sea Anemone*